



NATIONAL LEVEL SCIENCE TALENT SEARCH EXAMINATION (UPDATED)


CLASS - 2
Question Paper Code : UN499

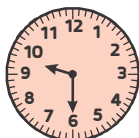
KEY

1. A	2. A	3. C	4. D	5. D	6. A	7. D	8. A	9. C	10. C
11. D	12. A	13. D	14. D	15. B	16. A	17. C	18. C	19. C	20. A
21. B	22. B	23. B	24. D	25. C	26. D	27. B	28. D	29. B	30. D
31. B	32. A	33. D	34. D	35. D	36. C	37. D	38. B	39. D	40. D
41. A	42. D	43. B	44. D	45. C	46. A	47. A	48. D	49. B	50. B


SOLUTIONS

MATHEMATICS

- 01. (A) $15 + 51 = 66$
- 02. (A) Straight lines > curved lines.
- 03. (C)  is second shortest.
- 04. (D) 24, 26, 28, 30, 32, 34, 36, 38
- 05. (D) Milk, water, juice can be measured in litres.
- 06. (A) Option : (A) = 89 ; Option : (B) = 81
Option : (C) = 85 ; Option : (D) = 78

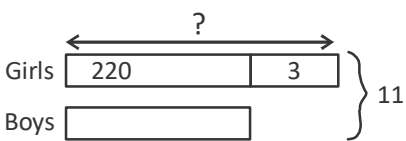


07. (D)

- 08. (A) $70 \text{ tens } 26 \text{ ones} = 700 + 26 = 726$
- 09. (C) Adults 
- $840 - 220 = 620$
- $620 - 220 = 400$
- There are 400 more children than adults in the hall
- 10. (C) $1 + 2 + 3 + 4 = 10$
 $10 \div 2 = 5$
- 11. (D) Vihaan = 250 cm
Surya = 250 cm + 10 cm = 260 cm
John's = 260 cm + 45 cm = 305 cm

12. (A) $20 \div 5 = 4$ groups of files
 $4 \times ₹ 2 = ₹ 8$
 $12 \div 3 = 4$ groups of notebooks
 $4 \times ₹ 1 = ₹ 4$
 $₹ 8 + ₹ 4 = ₹ 12$
 She paid ₹ 12
13. (D) 2 kittens \rightarrow 8 kg
 1 kitten $8 \text{ kg} \div 2 = 4 \text{ kg}$
14. (D) $36 \div 4 = 9$
 She will take 9 days to finish the book.
15. (B) Mr Simha will not have enough sugar on Friday.

Day	Amount of sugar left after using
Monday	7 kg
Tuesday	5 kg
Wednesday	3 kg
Thursday	1 kg

16. (A) 

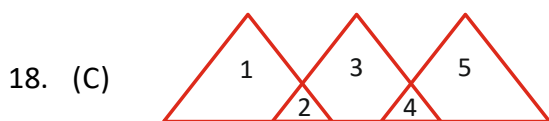
$$25 - 14 = 11 \text{ (no. of children)}$$

$$11 - 3 = 8$$

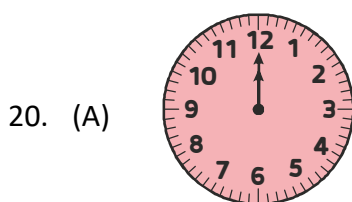
$$8 \div 2 = 4 \text{ (no. of boys)}$$

$$4 + 3 = 7$$

17. (C) Cone has one vertex, one plane face, one curved face and one edge.



19. (C) Tens and Hundreds digit interchanges = 763
 $763 - 673 = 90$



GENERAL SCIENCE

21. (B) Skull is made up of a group of bones that protects the brain.
22. (B) A shadow is always formed on the opposite side of light source. In the given picture, the shadow of the tree is formed in the West direction, hence the light source, i.e., Sun must be in the East direction. The Sun rises in the East, hence it is morning time.
23. (B) Woollen clothes shown in the given figures are worn in winter season.
24. (D) Cooking oil can be obtained from the seeds of sunflower plant and groundnut plant by crushing the seeds. Coconut oil is obtained from the kernels of coconut.
25. (C) Mars, Jupiter, Saturn are the sequence of planets based on their distance from the Sun i.e., nearest to the farthest.
26. (D) All the given pictures show that wind has direction.
27. (B) The road sign shown in option (B) represents school ahead.
 Option (A) represents road sign-men at work.
 Option (C) represents zebra crossing.
 Option (D) represents road sign-hospital.
28. (D) All the given items are found in a first aid box.
29. (B) The correct matching is P-ii; Q-iv; R-i; S-iii
30. (D) Bones and muscles together help us to perform different activities like weight lifting, playing, skipping, swimming etc.
31. (B) Stomach is an internal organ of our body that helps to digest the food that we eat.
32. (A) I am an omnivore (Bear) as I eat plants and at other times I eat meat also. Tiger and lion are carnivorous animals whereas cow is an herbivorous animal.
33. (D) Farm animals do a lot of work for us. They are kept in farms and give us many useful things.

34. (D) Potato is a stem.
35. (D) Mango, Apple and Spinach are protective foods.
36. (C) An Eskimo lives in Igloo.
37. (D) Types of clothes we wear depend on both climate and occasion
38. (B) Rice can be eaten only after cooking.
39. (D) Fruits and vegetables are the foods that protect us from diseases.
40. (D) He should eat energy rich and protein rich foods to recover soon from his injuries.
41. (A) Hen provides us eggs.
42. (D) Sugarcane is a stem.
43. (B) Maize, barley, and oats are examples of seeds. They are cereal crops. Cereal crops are mostly grasses cultivated for their edible seeds.
44. (D) We need water for drinking, bathing and cooking.
45. (C) Sun is the main source of heat and light on the earth.
46. (A) Windmill needs air to rotate.
47. (A) We have more than 600 muscles.
48. (D) Cow is a domestic animal. Tiger is a wild animal, parrot is a bird, bear is a wild animal.
49. (B) Herbivorous animal eat only plants and plant products. Carnivorous eat only flesh of other animals. Omnivorous animals eat plants and other animals.
50. (B) Leopard is both wild as well as carnivorous animals.

=====*The End*=====